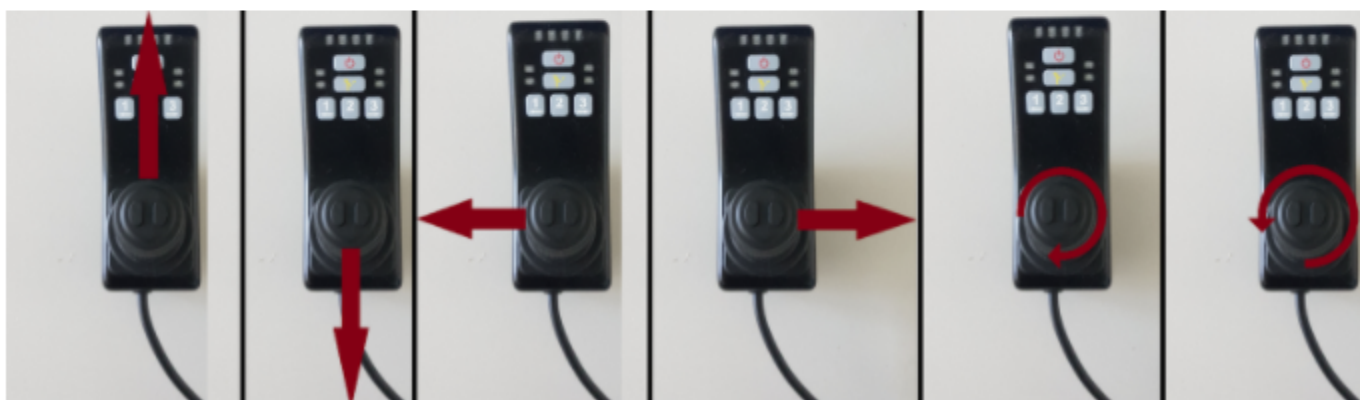


Orientation Robotic Arm

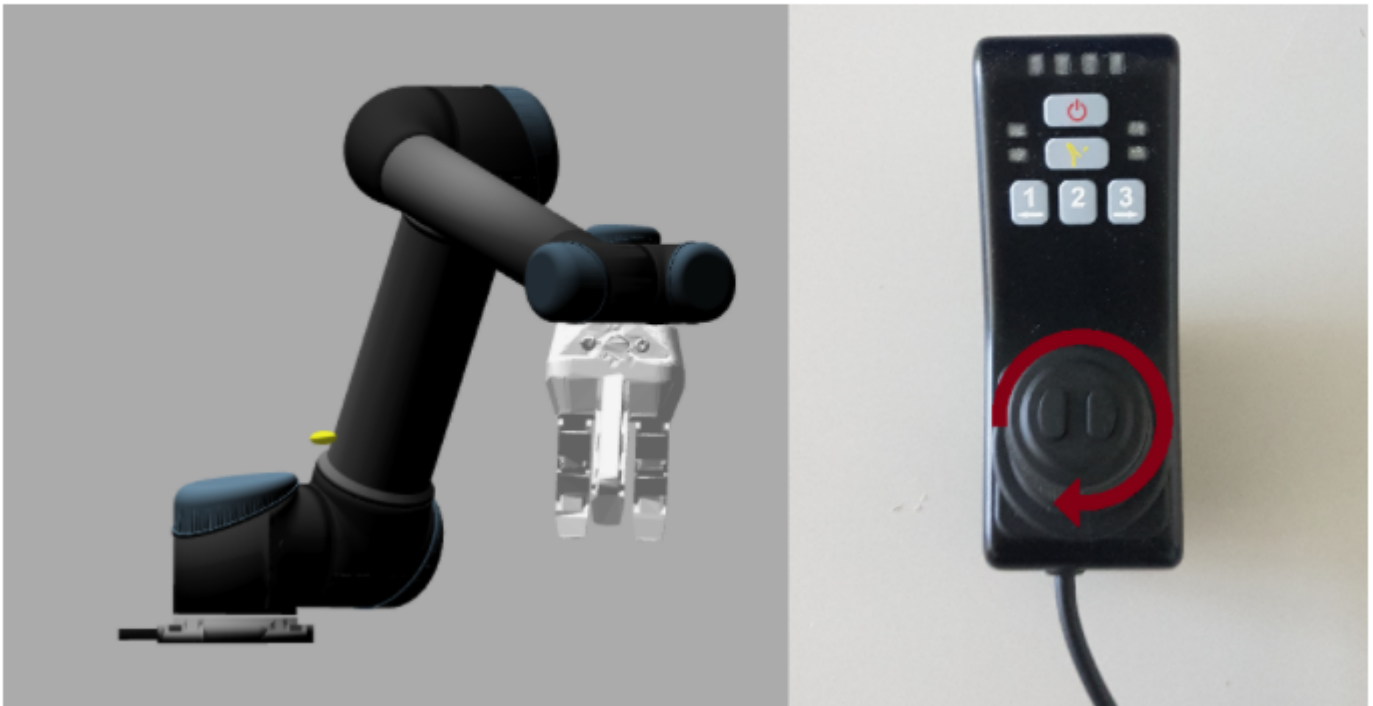
The orientation of a robot hand can be controlled with a joystick using the following commands: Up, Down, Left, Right, Clockwise Rotation and Counter-Clockwise Rotation. Given a robot arm starting position, intuitively, what should be the robot response ?

The possible commands of the joystick



QUESTION 1

Given the robot arm starting position how should the robot response to the given input ?



Option A

Option B



Option C

Option D



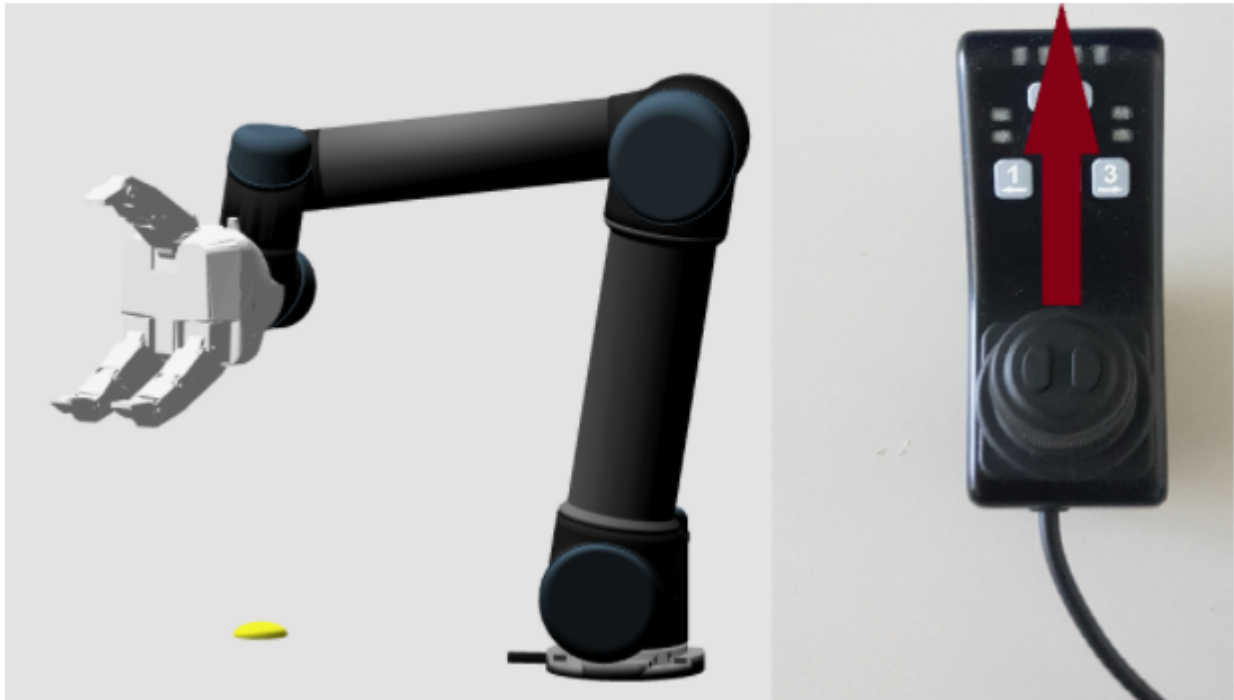
Option E

Option F



QUESTION 2

Given the robot arm starting position how should the robot response to the given input ?



Option A

Option B



Option C

Option D



Option E

Option F



QUESTION 3



Option A

Option B



Option C

Option D



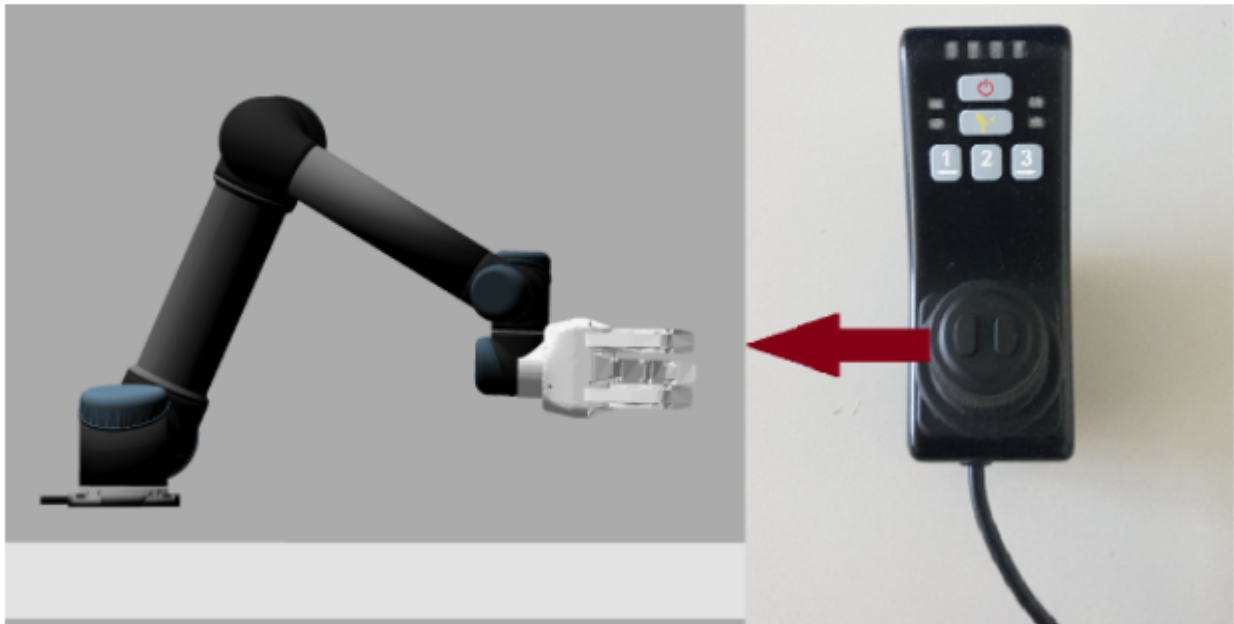
Option E

Option F



QUESTION 4

Given the robot arm starting position how should the robot response to the given input ?



Option A

Option B



Option C

Option D



Option E

Option F



QUESTION 5

Given the robot arm starting position how should the robot response to the given input ?



Option A

Option B



Option C

Option D



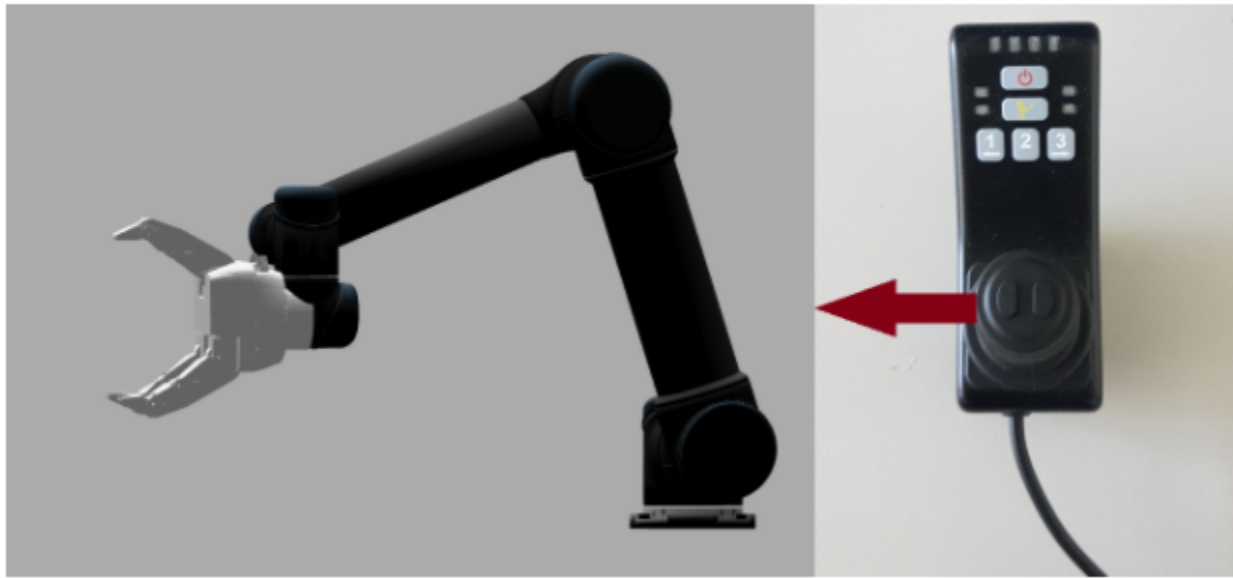
Option E

Option F



QUESTION 6

Given the robot arm starting position how should the robot response to the given input ?



Option A

Option B



Option C

Option D



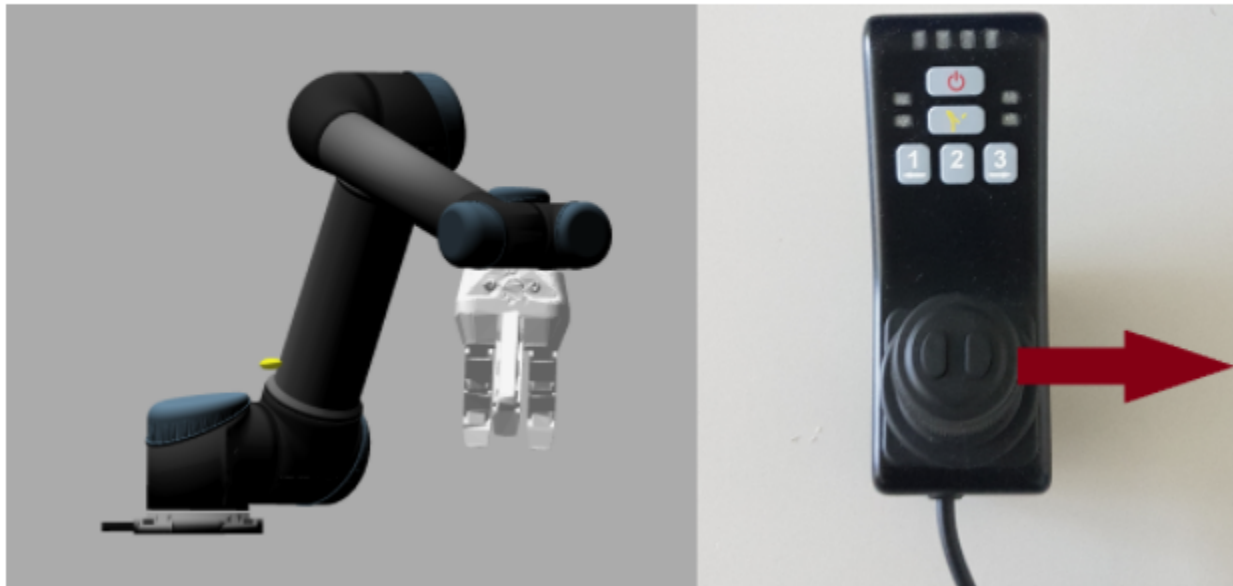
Option E

Option F



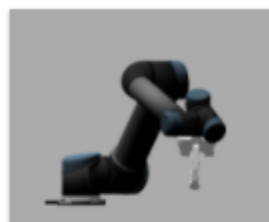
QUESTION 7

Given the robot arm starting position how should the robot response to the given input ?



Option A

Option B



Option C

Option D



Option E

Option F



QUESTION 8

Given the robot arm starting position how should the robot response to the given input ?



Option A

Option B



Option C

Option D



Option E

Option F

